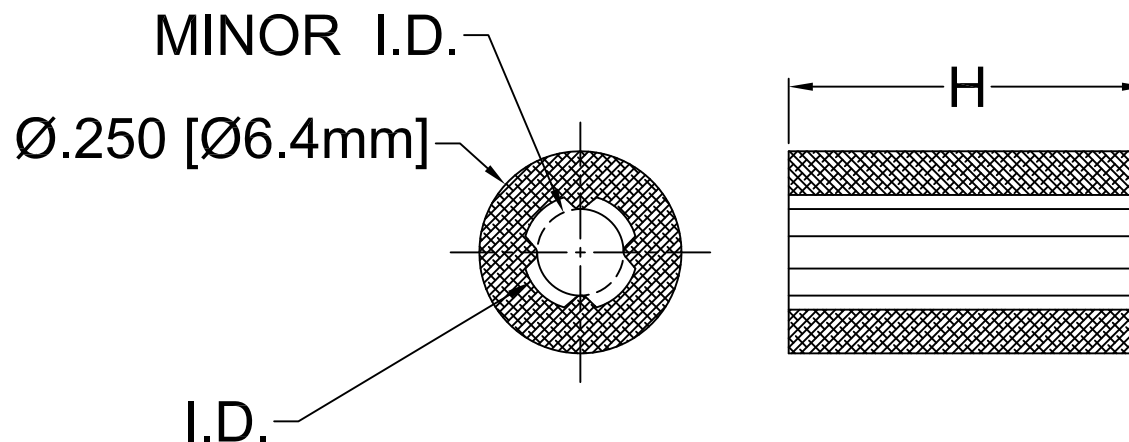


REV.	DESCRIPTION	DATE	APPROVED
<b>D</b>	Engineering Update w/o Changes	<b>03/01/04</b>	<b>M. C.</b>
<b>E</b>	Removed SRS-3 From Data Table	<b>06/01/06</b>	<b>M. C.</b>
<b>F</b>	Updated SRS-2 Minor ID	<b>10/11/07</b>	<b>M. C.</b>
<b>G</b>	SRS-5 Obsolete	<b>03/27/09</b>	<b>T. Y.</b>



PART NO.	SCREW SIZE	MINOR I.D.	I.D.	"H" - IN .005"(.127mm) INCREMENTS
SRS-1	#4	.107"(2.7mm)	.142"(3.6mm)	.050"~1.250"(1.3~31.8mm)
SRS-2	#6 (M3.5)	.125"(3.1mm)	.174"(4.4mm)	.050"~1.250"(1.3~31.8mm)
SRS-4	M3	.113"(2.9mm)	.144"(3.7mm)	.050"~1.250"(1.3~31.8mm)

4. TOLERANCE "H" DIMENSION:

$H \leq 0.500$  (12.7mm) $\pm 0.005$ (0.1mm)

$0.500 > H$  (12.7mm) $\pm 0.010$ (0.3mm)


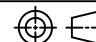
3. MATERIAL: PVC, 94V-0, GREY. BIVAR MATERIAL CODE 37-GY.

M.A HANNA PVC CONCENTRATE, 10062077 GREY.

2. MATERIAL: PVC, 94V-0, WHITE. BIVAR MATERIAL CODE 28-WE.

ALPHAGARY DURAL PVC, 250M UV WHITE 3300.

1. GENERAL SPECIFICATIONS: BIVAR EXTRUDED COMPONENT SPECIFICATION BV00-E102.

STANDARD TOLERANCE ( UNLESS OTHERWISE SPECIFIED )		 4 THOMAS, IRVINE, CA. 92618 TEL: (949) 951-8808 FAX: (949) 951-3974	
<u>DECIMALS</u>	<u>ANGULAR</u>		
.X ± .1	X° ± 1°	 <b>TITLE:</b> SELF-RETAINING PVC SPACERS	
.XX ± .01			
.XXX ± .005		<b>PART NO:</b> SRS-X	
<b>DESIGNED:</b> Shane Irving	<b>DATE:</b> 05/20/99	<b>REVISION:</b> G	
<b>CHECKED:</b> M. Chen	<b>DATE:</b> 02/19/03	<b>CAGE CODE : 32559</b> <b>SHEET # 1 OF 1</b>	
CAD GENERATED DOCUMENT, DO NOT MEASURE DRAWING.			